

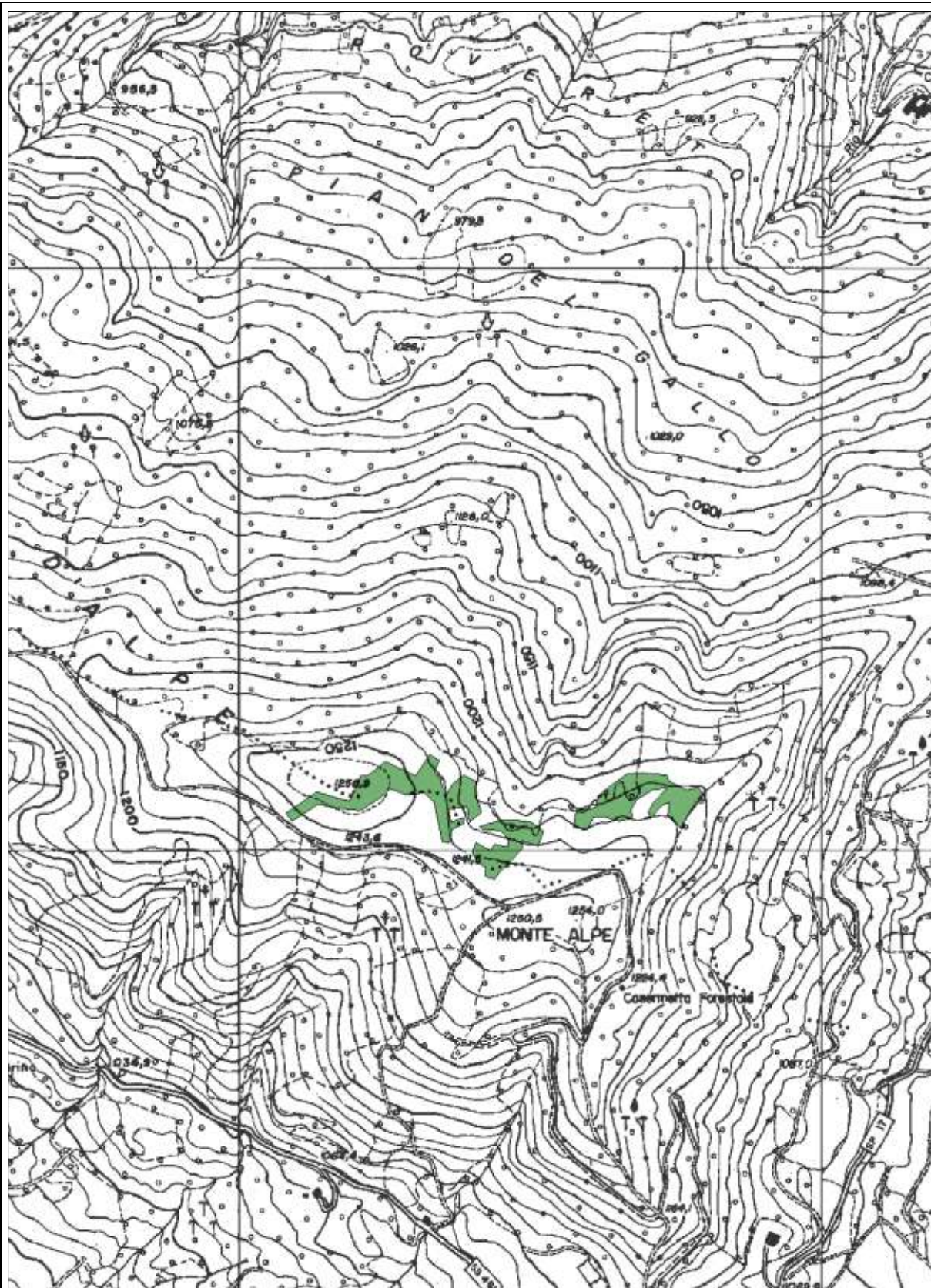



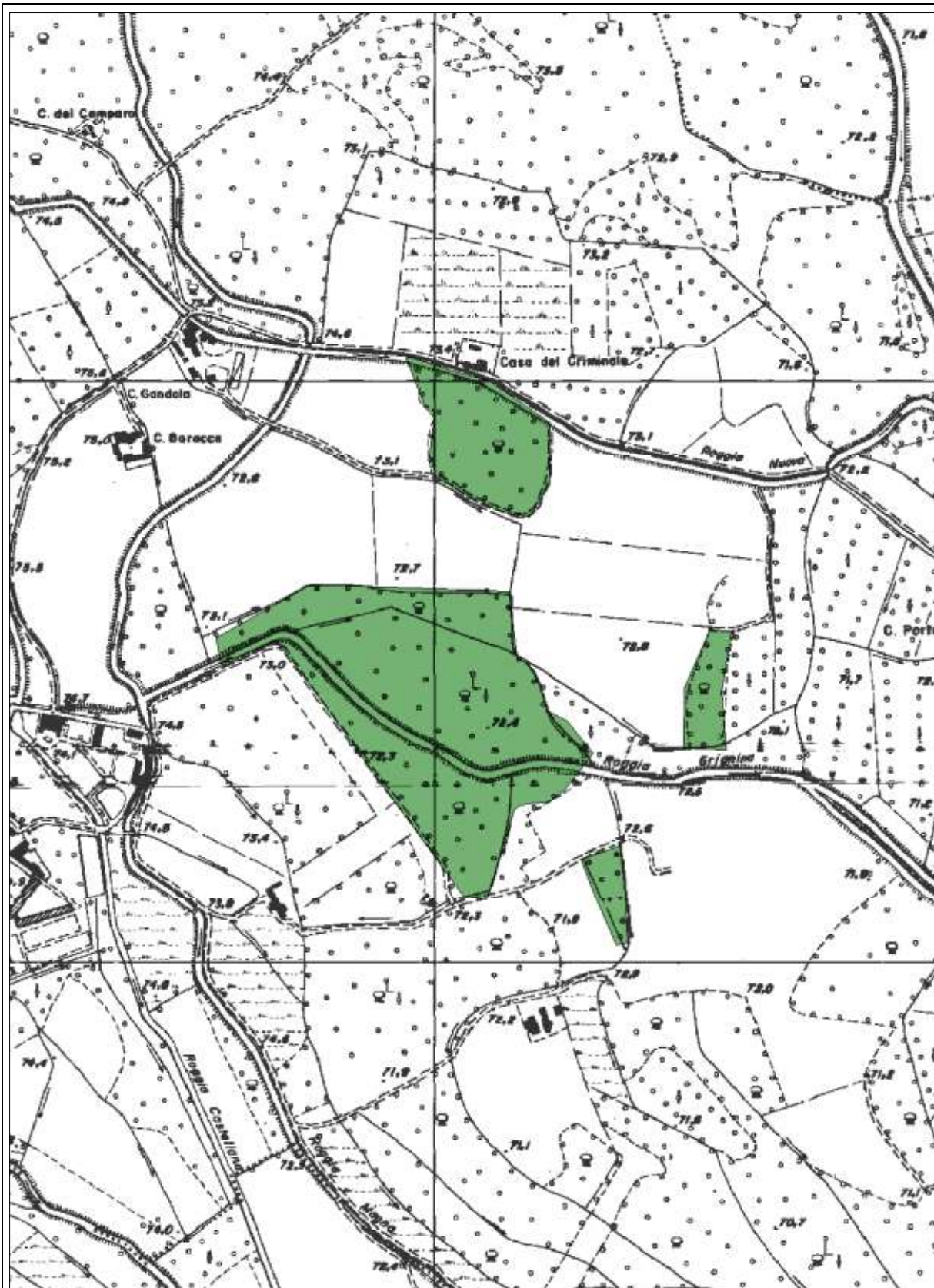
scala	superficie (ha)	Tavola CTR	Provincia Pavia	Specie arboree:	
			Comune/i Motta Visconti/ Bereguardo	<i>Alnus glutinosa</i>	<i>Quercus robur</i>
			Località Bosco Maina	<i>Carpinus betulus</i>	0
				<i>Populus alba</i>	
				<i>Populus nigra</i>	
				<i>Prunus padus</i>	
1:20.000	150.48	A7II			




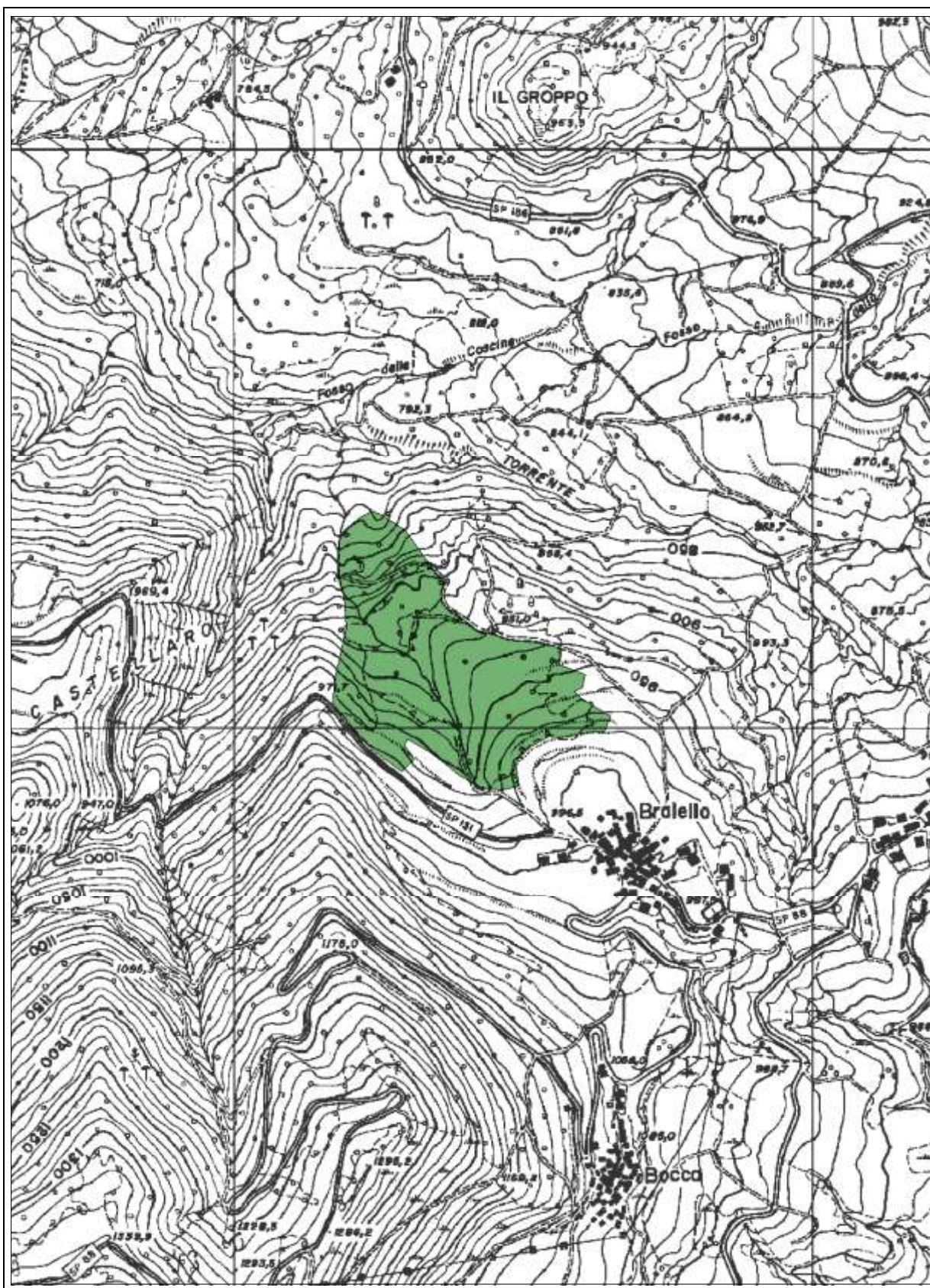
scala	superficie (ha)	Tavola CTR	Provincia Pavia	Specie arboree:
			Comune/i Valverde	<i>Acer pseudoplatanus</i>
1:10.000	1.38	B91	Località Mandasco	



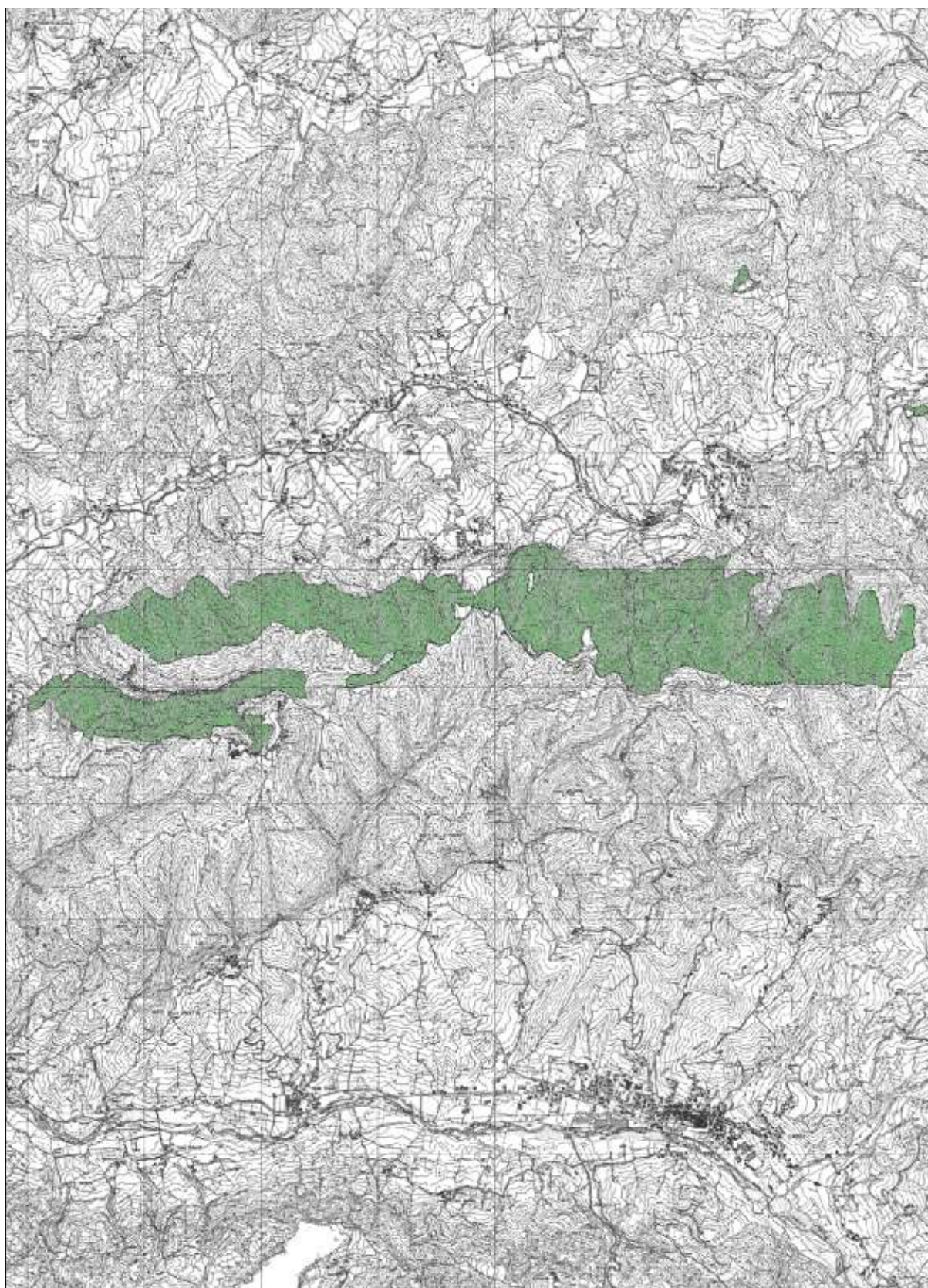
scala	superficie (ha)	Tavola CTR	Provincia Pavia	Specie arboree:
			Comune/i Romagnese	<i>Betula pendula</i>
			Località Monte Alpe	
1:10.000	3.01	B9II		



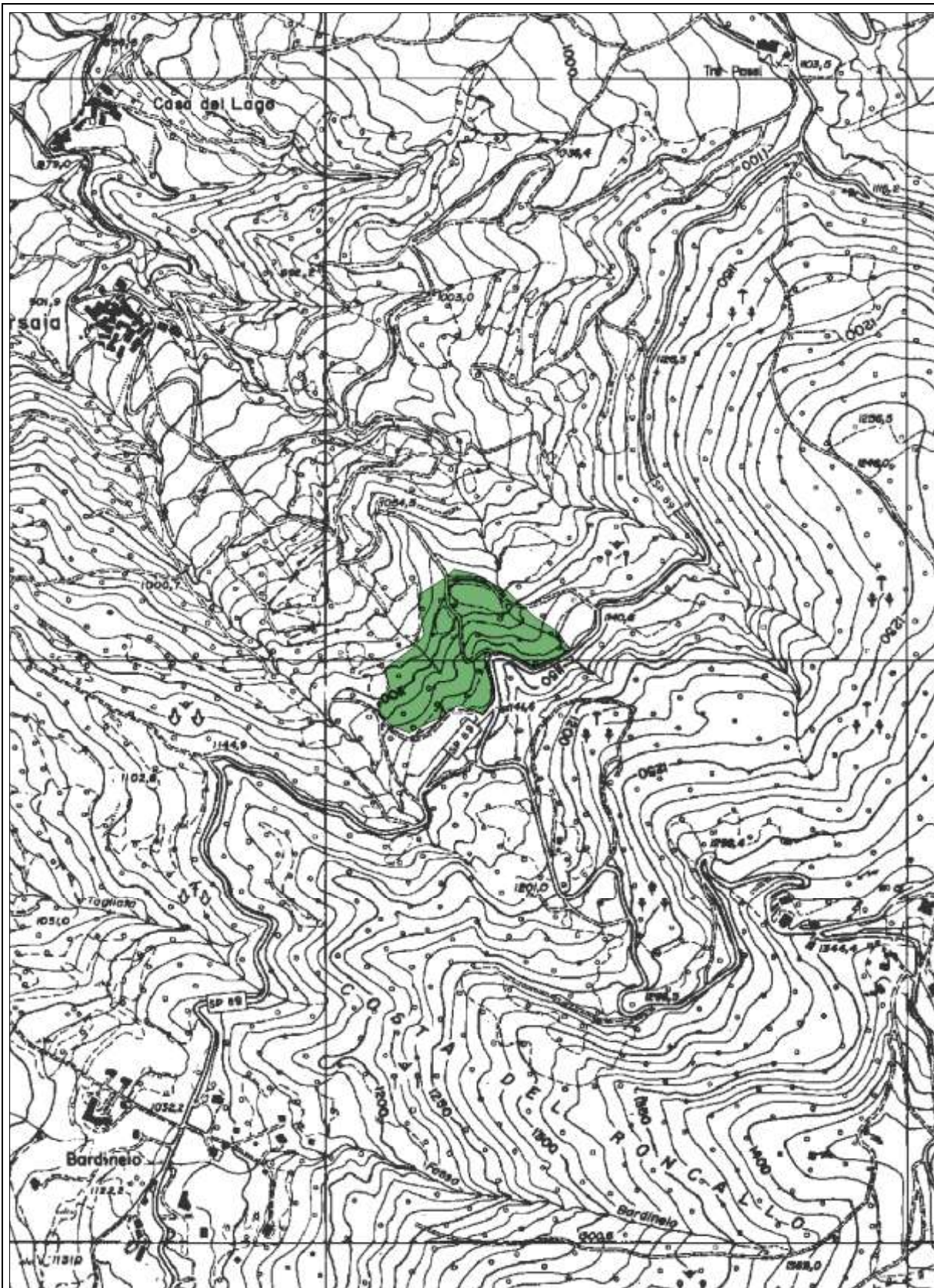
scala	superficie (ha)	Tavola CTR	Provincia Pavia Comune/i Gambolò Località Molino d'Isella	Specie arboree:															
1:10.000		A7II		<table><tr><td>Carpinus betulus</td><td></td><td></td></tr><tr><td></td><td></td><td></td></tr><tr><td></td><td></td><td></td></tr><tr><td></td><td></td><td></td></tr><tr><td></td><td></td><td></td></tr></table>	Carpinus betulus														
			Carpinus betulus																



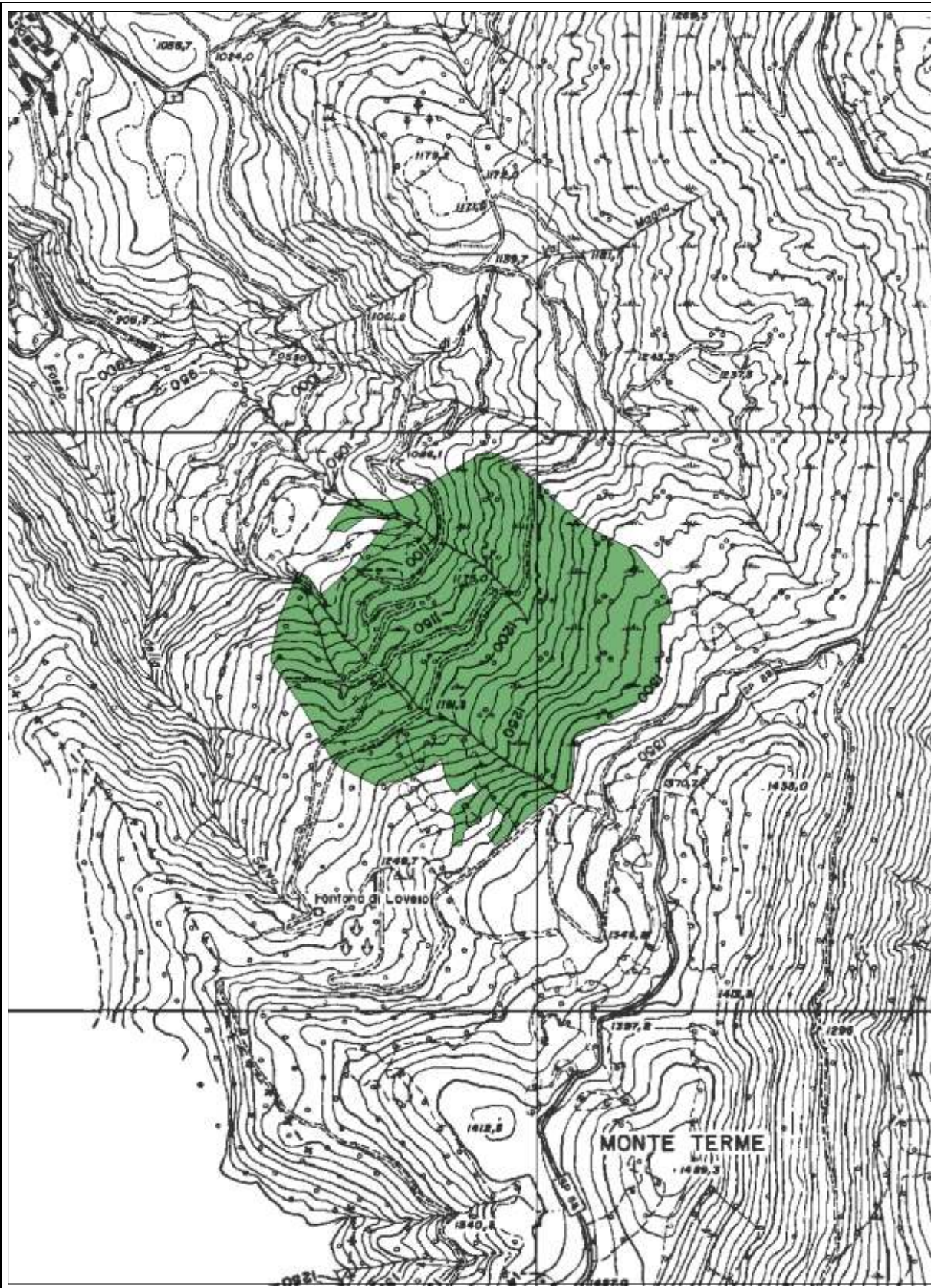
scala	superficie (ha)	Tavola CTR	Provincia Pavia Comune/i Brallo di Pregola Località Brailello	Specie arboree:															
1:10.000	11.98	B9IV		<table><tr><td>Castanea sativa</td><td></td><td></td></tr><tr><td></td><td></td><td></td></tr><tr><td></td><td></td><td></td></tr><tr><td></td><td></td><td></td></tr><tr><td></td><td></td><td></td></tr></table>	Castanea sativa														
Castanea sativa																			




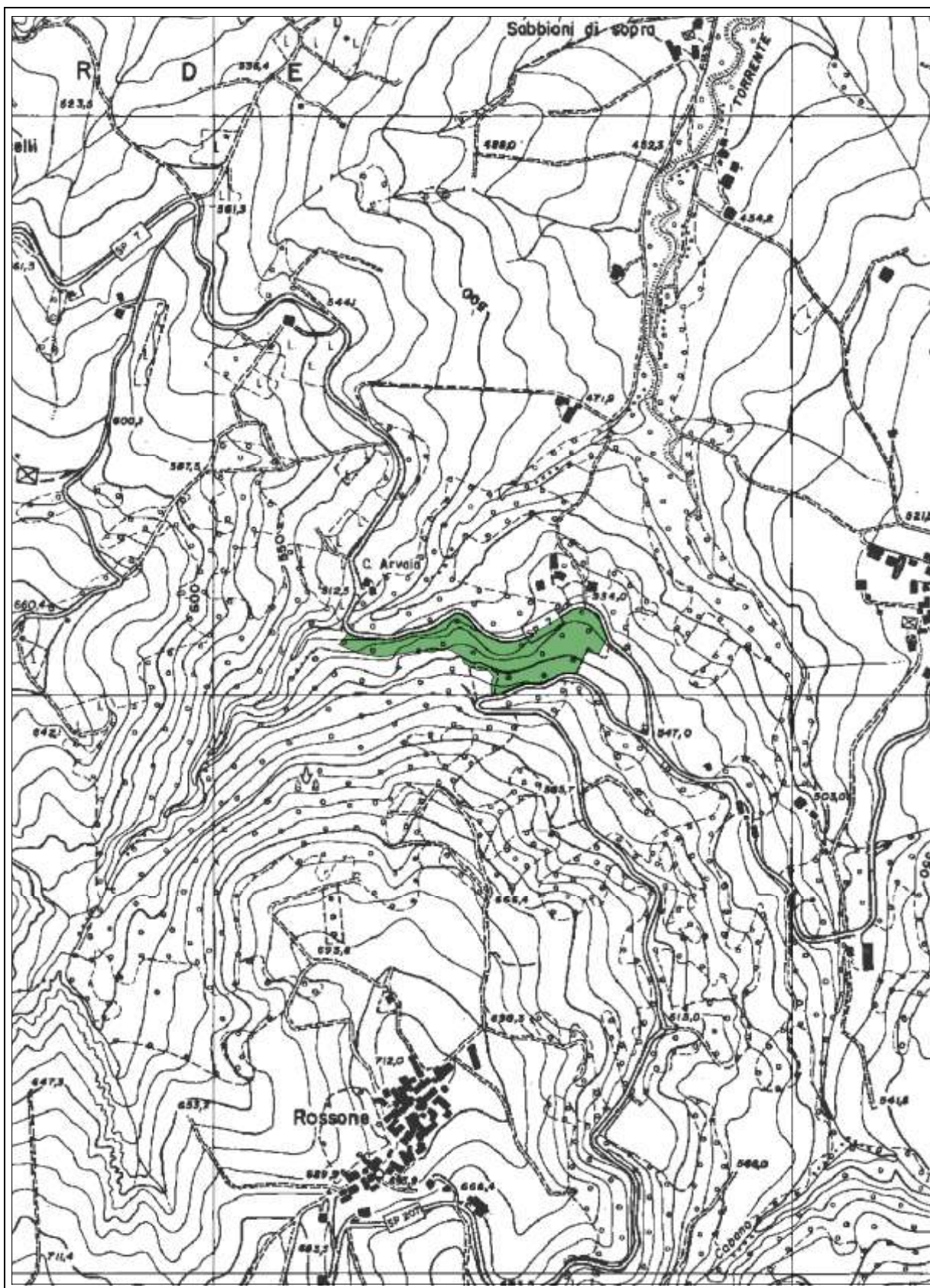
scala	superficie (ha)	Tavola CTR	Provincia Pavia	Specie arboree:	
1:50.000	530.53	B9I	Comune/i Ponte Nizza/ Val di Nizza		
			Località monti Bruno, dei Marroni, Farnago, Valle Grande	Castanea sativa	



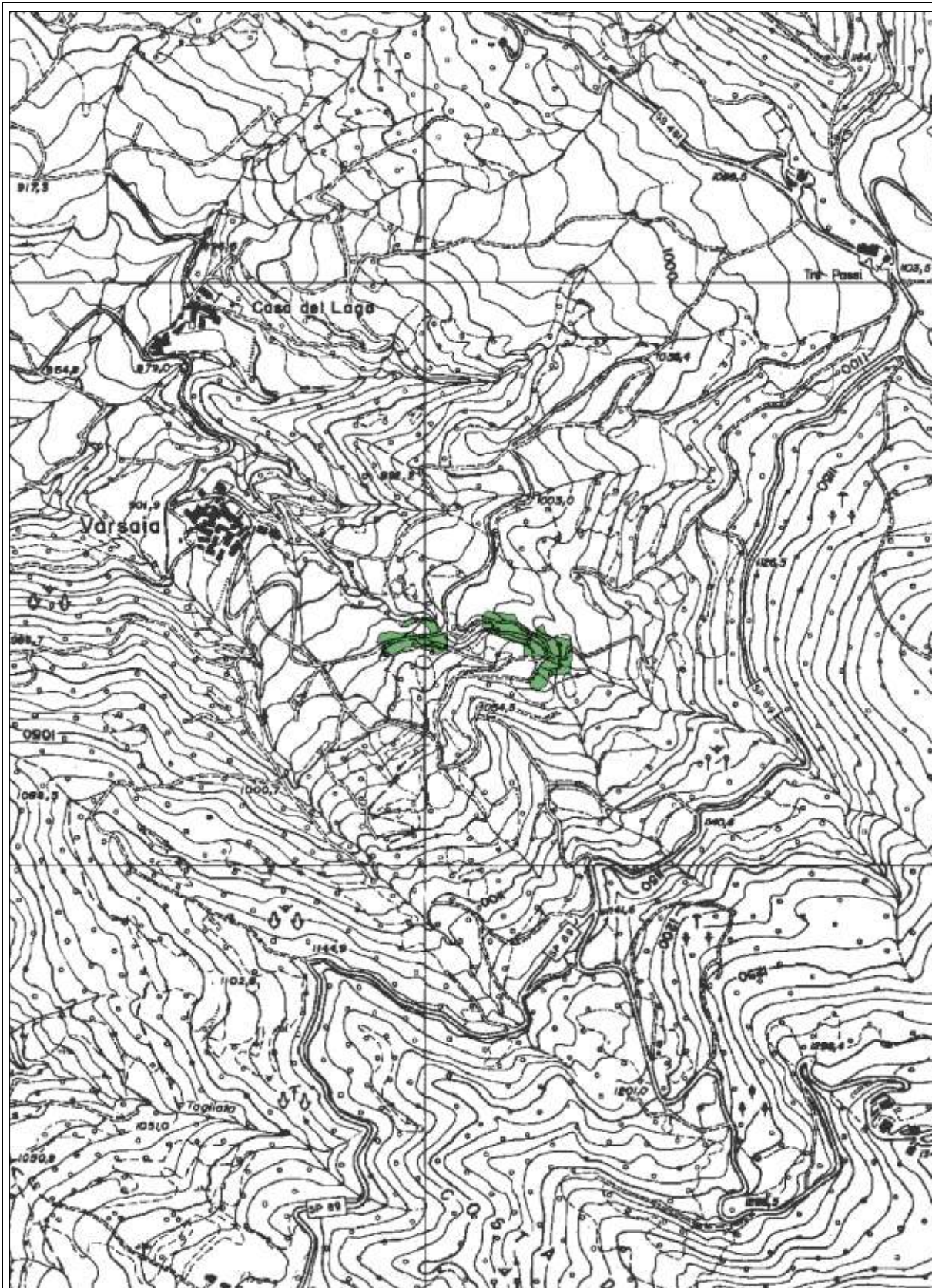
scala	superficie (ha)	Tavola CTR	Provincia Pavia	Specie arboree:
			Comune/i Menconico	
			Località Versaia	
1:10.000	4.63	B9II		<i>Fagus sylvatica</i>




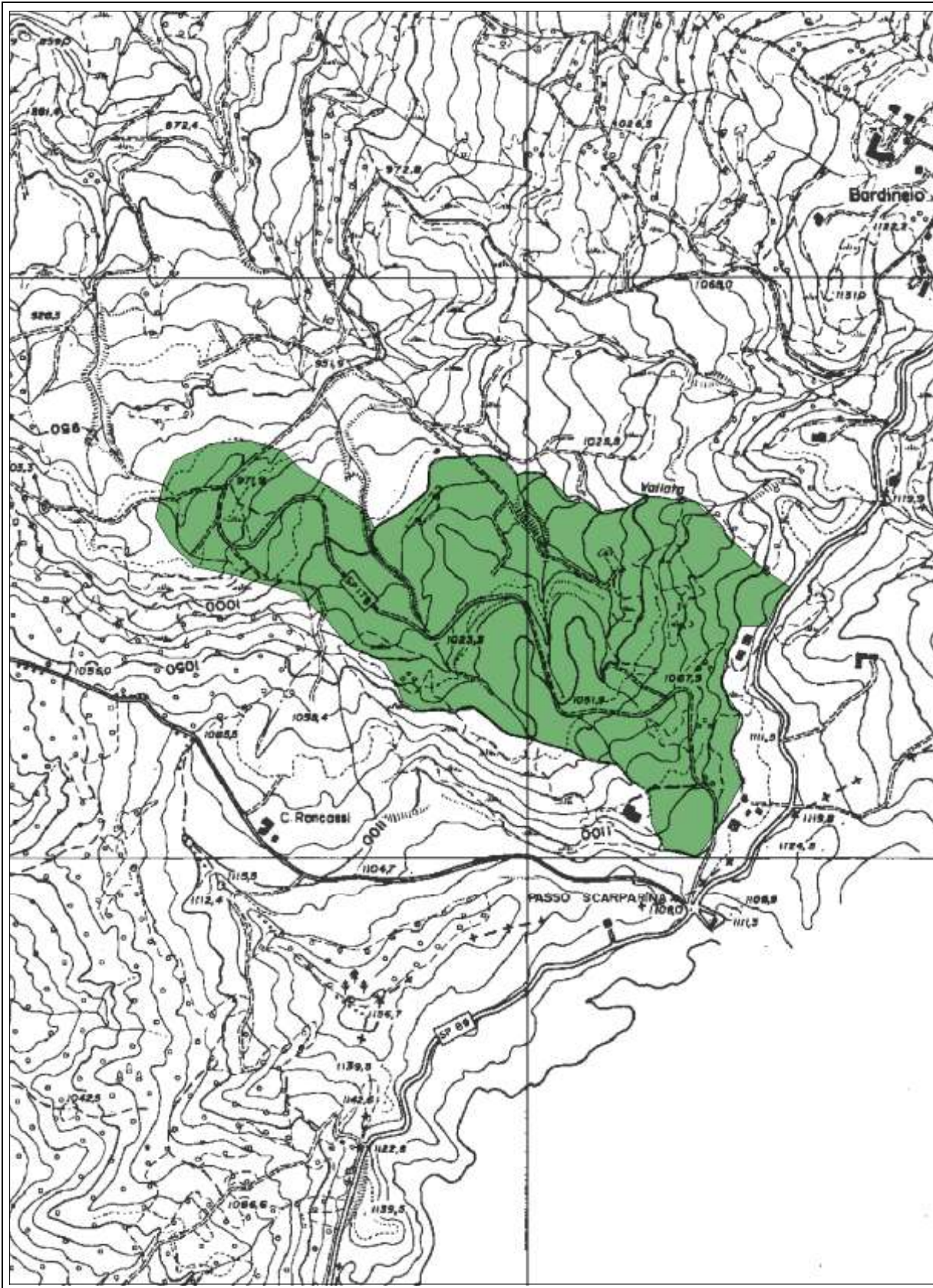
scala	superficie (ha)	Tavola CTR	Provincia Pavia	Specie arboree:
			Comune/i Brallo di Pregola	<i>Fagus sylvatica</i>
1:10.000	28.26	B9III - IV	Località Cima Colletta-Cencerate	



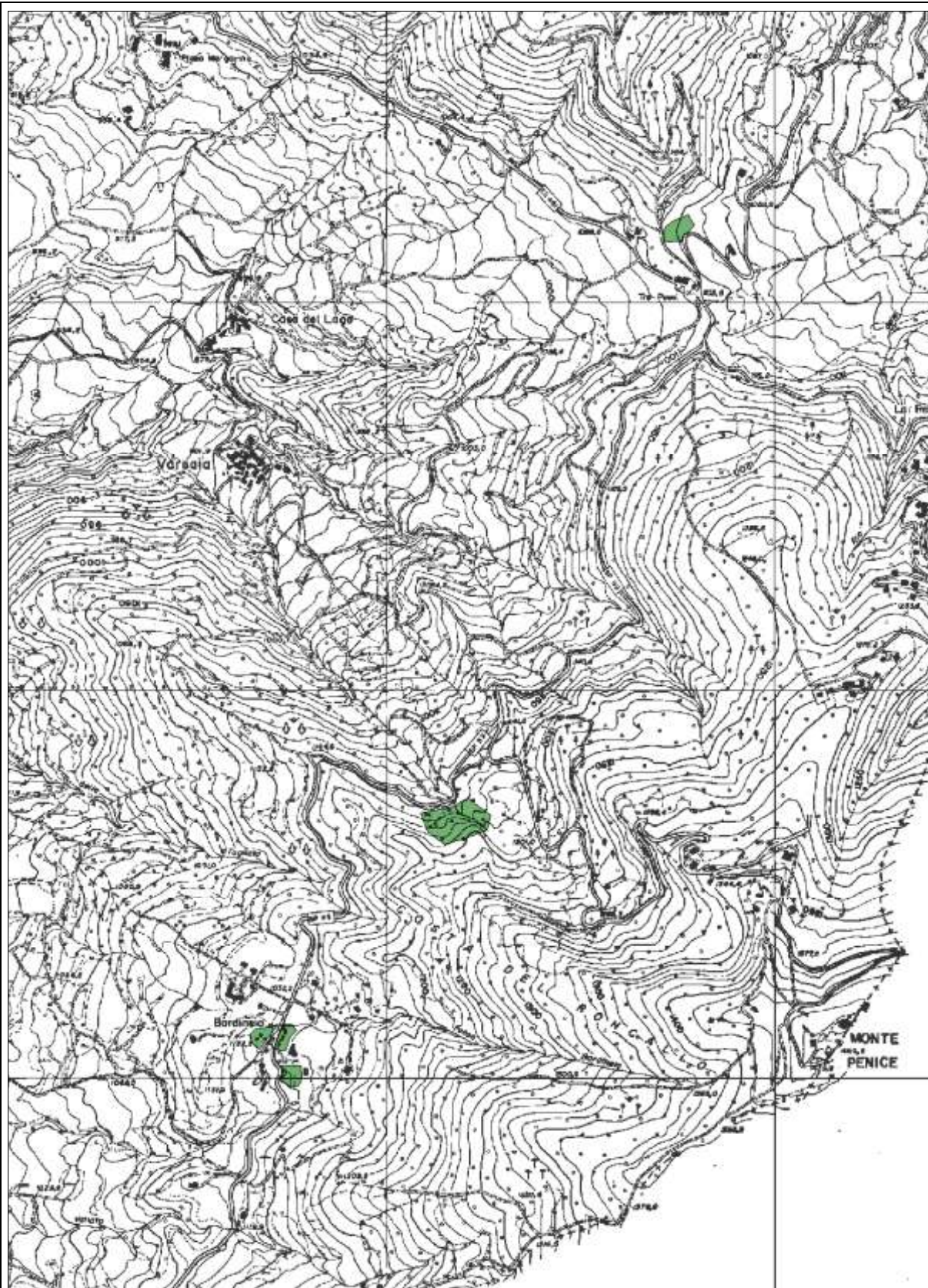
scala	superficie (ha)	Tavola CTR	Provincia Pavia	Specie arboree:
			Comune/i Zavattarello	
			Località Cascina Arvaia	
1:10.000	2.84	B91		<i>Ostrya carpinifolia</i>




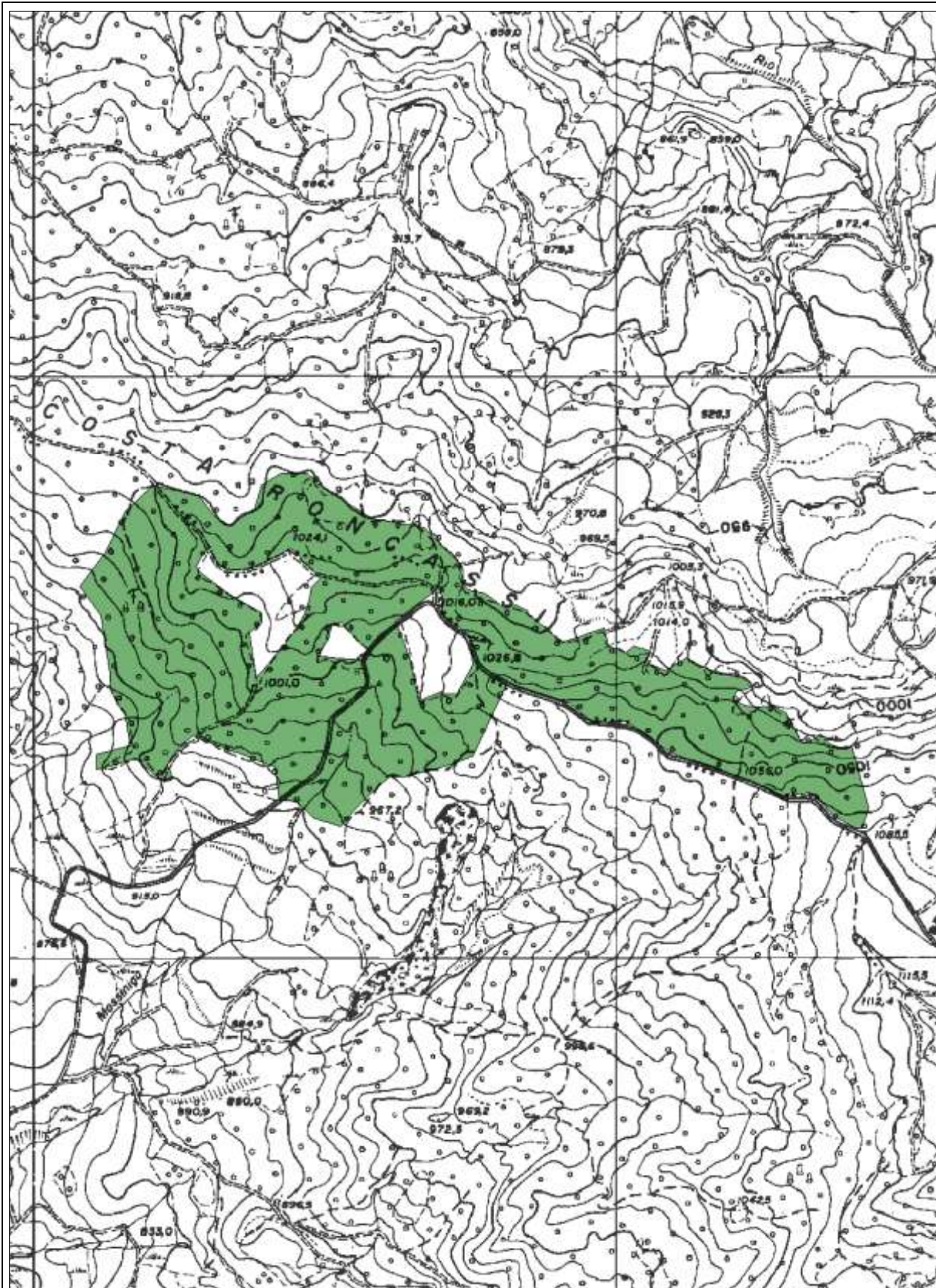
scala	superficie (ha)	Tavola CTR	Provincia Pavia	Specie arboree:
			Comune/i Menconico	
			Località Versaia	
1:10.000	1.25	B9II		<i>Ostrya carpinifolia</i>




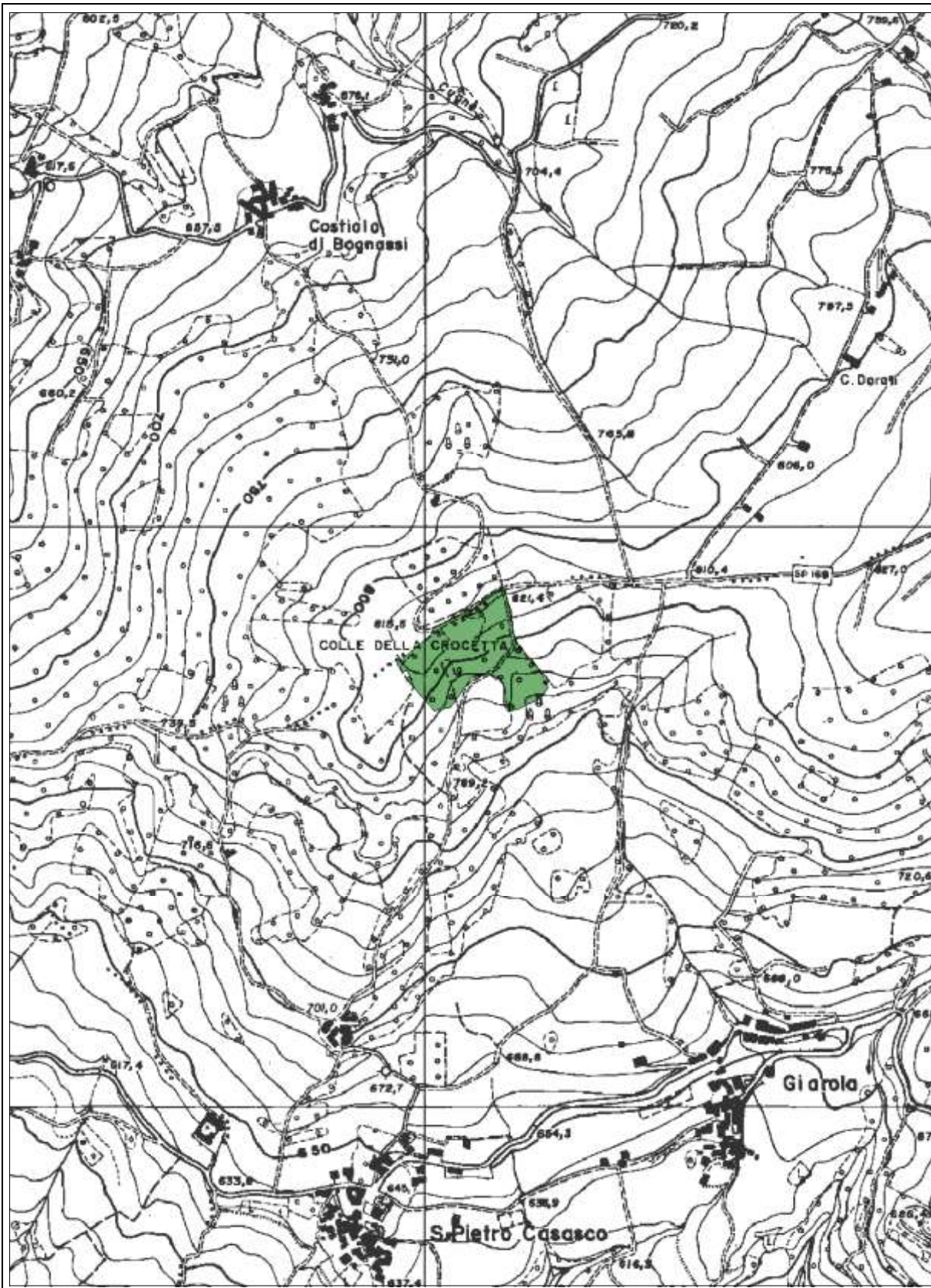
scala	superficie (ha)	Tavola CTR	Provincia Pavia	Specie arboree:
1:10.000	37.02	B9II	Comune/i Menconico	
			Località Passo Scarpalina	
				<i>Prunus avium</i>




scala	superficie (ha)	Tavola CTR	Provincia Pavia	Specie arboree:
			Comune/i Menconico	
			Località Tre Passi	
1:15.000	2.34	B9II		<i>Pirus pyrastrer</i>



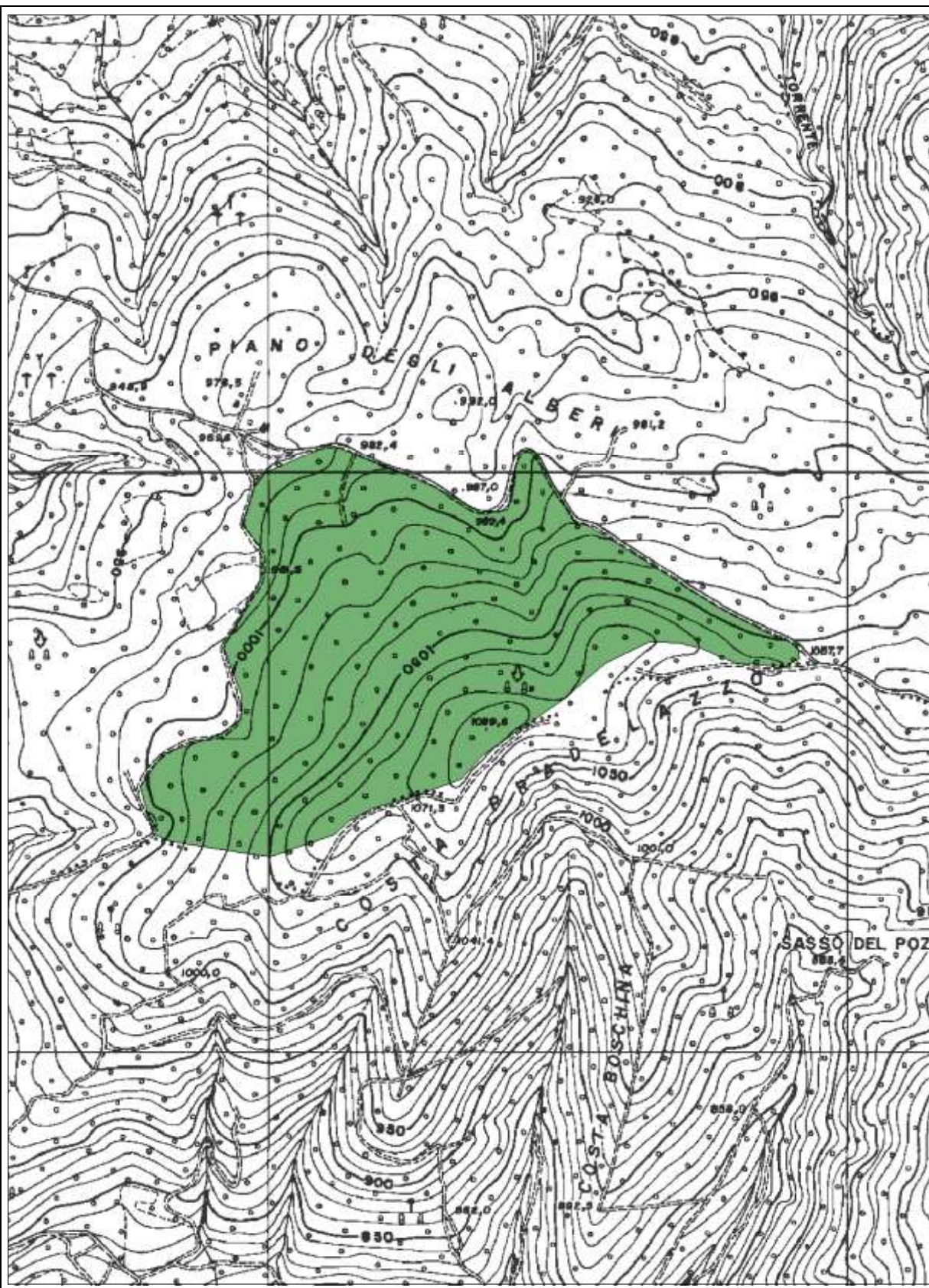
scala	superficie (ha)	Tavola CTR	Provincia Pavia	Specie arboree:
			Comune/i Menconico/ S. Margherita di Staffora	<i>Quercus cerris</i>
1:10.000	34.29	B9II	Località Massinigo	



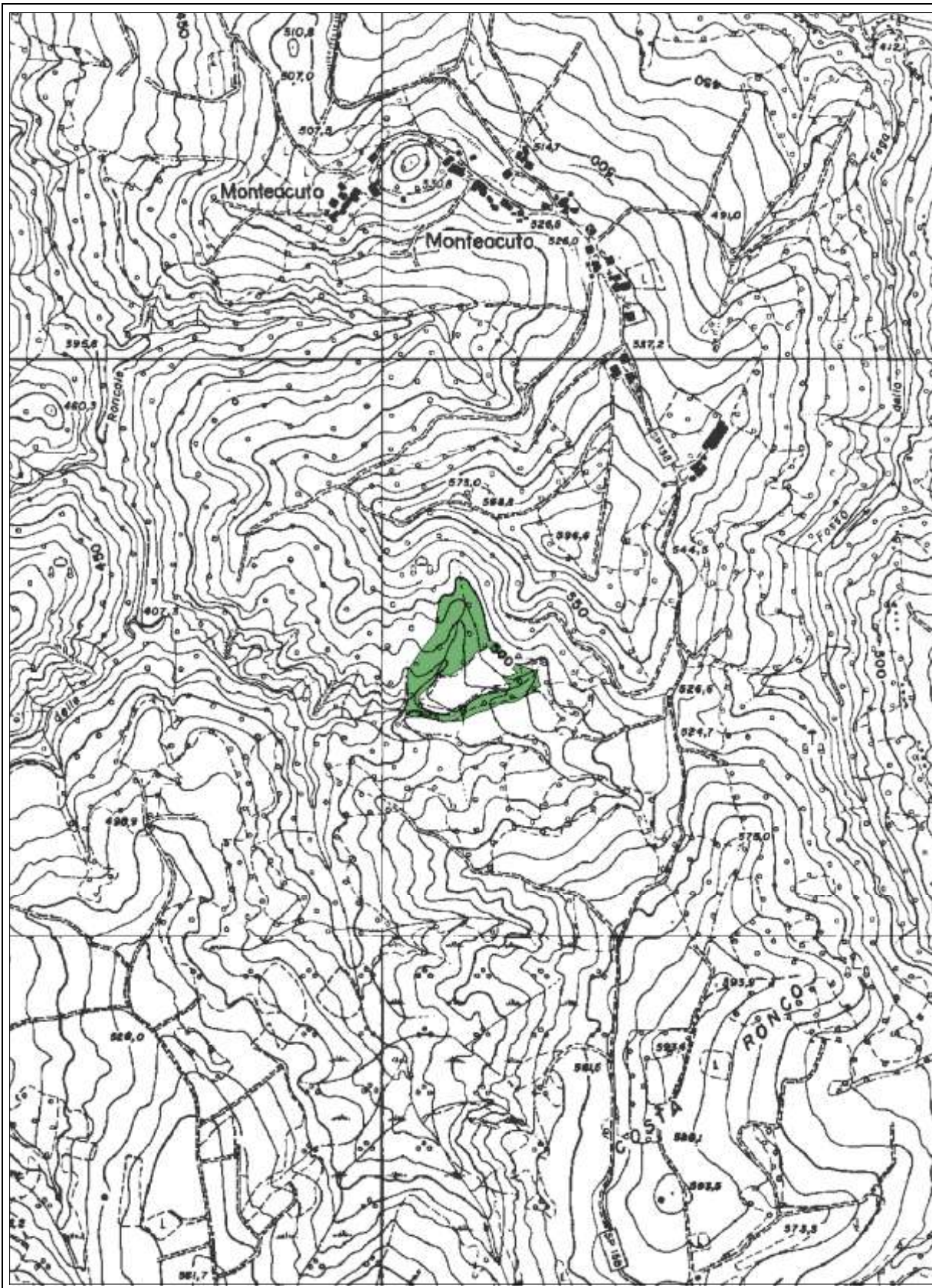
scala	superficie (ha)	Tavola CTR	Provincia Pavia	Specie arboree:
			Comune/i Menconico	
			Località Colle della Crocetta	
1:10.000	2.83	B9I		<i>Quercus petraea</i>



scala	superficie (ha)	Tavola CTR	Provincia Pavia	Specie arboree:
			Comune/i Zerbolo	<i>Quercus pubescens</i>
			Località Bosco Busalarga	
1:10.000	3.16	A7II		



scala	superficie (ha)	Tavola CTR	Provincia Pavia Comune/i Varzi Località S. Cristina	Specie arboree:
1:10.000	38.65	B9II		<i>Sorbus torminalis</i>



scala	superficie (ha)	Tavola CTR	Provincia Pavia Comune/i Val di Nizza Località Montecuto	Specie arboree:
1:10.000	2.09	B8III		<i>Sorbus torminalis</i>